



C4000

Two great meters in one

C4000 bulk range of combination cold water meters

C4000 combination cold water meters

Combining two outstanding Elster metering technologies in one extremely compact unit, the C4000's innovative in-line design delivers highly accurate bulk flow metering for applications with large variations in flow rate, helping to ensure optimum revenue collection.

Available in a range of four sizes and suitable for flow rates up to 250 m³/h, the C4000 features an innovative in-line design which delivers significant benefits, not only at installation but throughout its working lifetime. Offering the benefits of inductive register technology and combining the performance of both the H4000 and V200 range of meters, the C4000 measuring range ensures maximum revenue collection. The C4000 complies with all relevant international quality standards.

Information with intelligence

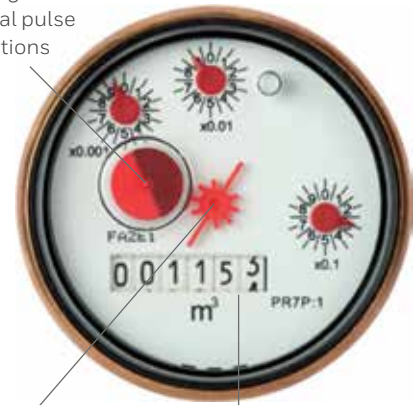
To deliver a complete metering system that addresses key efficiency objectives for water providers, the C4000 is designed to provide the level of information demanded by today's revenue management applications. To achieve this, the product offers a range of intelligent features, such as leakage alarms, data logging and tariffs. The meter is also fully compatible with Elster's range of intelligent meter reading systems, enabling the product to play an important role in revenue management, as well as improving customer service.



Key features

- Two inductive registers for improved output performance and security
- High turndown ratio
- Highly accurate bulk flow metering for applications with large variations in flow rate
- Designed to maximise revenue collection
- Compact, in-line construction for easy installation
- Available in sizes from 50mm to 100mm
- Longer wear life for optimum accuracy
- Meets Class B approval for the primary Woltmann meter and performs to Class C for the secondary V200 volumetric meter

Inductive target for bi-directional pulse communications



Star tell-tale for easy-to-see flow detection

Easy to read 6-figure display for sizes 50mm to 100mm

Compact, cost-effective, dependable

With a compact in-line design that simplifies the specification process by eliminating the need to differentiate between left or right-handed by-passmeters, the C4000 also features an easy-change metering insert, carrying both primary and secondary metering modules. This can be removed as a complete assembly, significantly reducing the time required for calibration, maintenance or replacement. As with all Elster meters, the product is designed and manufactured to rigorous quality standards for trouble-free operation, whatever its working environment. The C4000's superb design offers many features which increase its life cycle and reduce costs, including wear-resistant jewelled rotor bearings, tungsten carbide thrust pads and stub spindles with factory-potted moisture resistant electrical connections.

Enhanced communications and security

Using an inductive register to deliver enhanced communications performance and tamper-proof security, the C4000 provides effective protection against fraud. Compatible with PR6 and PR7 inductive pulse transmitters, the product features both high- and low speed bi-directional pulse capabilities as standard, and is fully compatible with other common ancillary devices including data loggers and AMR systems.

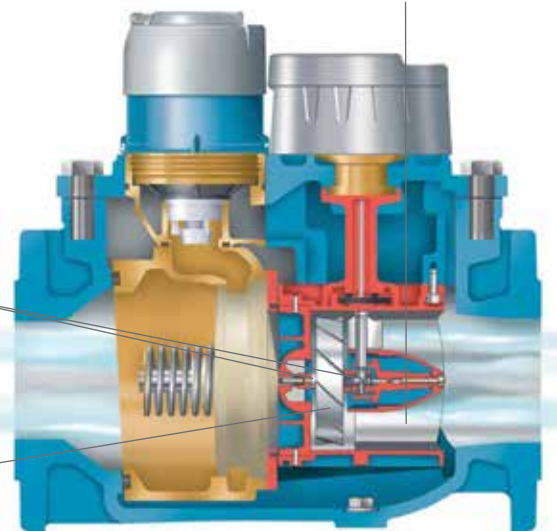
In-line strainer

The use of an Elster in-line strainer is recommended to protect the rotor and help reduce the effect of turbulence.

Maximum length flow straightening vanes

Hard surface rotor bearings – tungsten carbide and synthetic sapphire

Low mass rotor with hydrodynamic thrust relief



For more information

www.elstermetering.com

Elster Water Metering Ltd

130 Camford Way
Sundon Park, Luton
Bedfordshire, LU3 3AN
United Kingdom
T +44 1582 846400
F +44 1582 564728
water.metering@elster.com

All rights reserved. The company's policy is one of continuous product improvement and the right is reserved to modify the specifications contained herein without notice. These products have been manufactured with current technology and in accordance with the applicable referenced standards.

Lit Ref: 8517B5255
© 2017 Honeywell International Inc.

Honeywell