

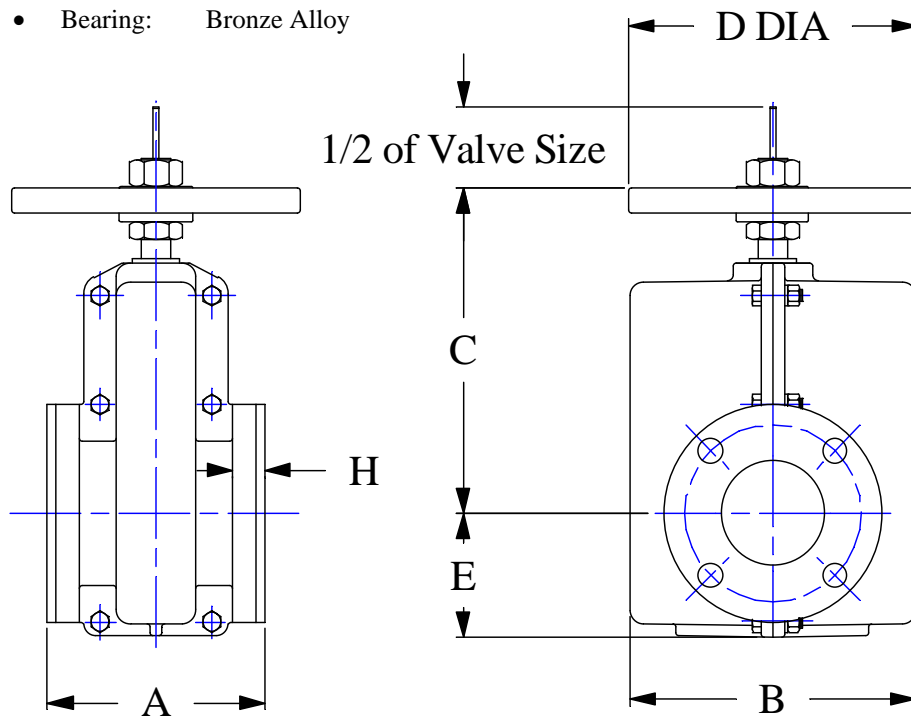
Series DHA

Full Round, Dual Pinch, Enclosed Construction, Hand Wheel Operated

- Clog resistant full round opening.
- Low pressure drop
- No packing
- Drop tight closure
- On/Off or throttling service

Specifications:

- Flanges: ANSI STD 125/150 lbs.
- Housing: Cast Iron, ASTM A48, Class 35 (Valve Sizes Up to 10")
Ductile Iron, ASTM A536-80, Class 65-45-12 (Valve Sizes 12" & Up)
- Stem: Carbon Steel
- Guide Rods: Carbon Steel
- Pinch Bars: Carbon Steel
- Bearing: Bronze Alloy



Options:

- Sleeve Elastomer
- Epoxy Paint
- ANSI STD 300 lbs Flange
- 316 Stainless Steel Stem
- Ductile Iron Housing
- Stem Cover Assembly
- Secondary Containment Package
- Limit Switches
- Chain Wheel
- Bevel Gear Box

All dimensions are in inches.

SIZE	1	1-1/2	2	2-1/2	3	4	6	8	10
A	5.50	6.50	7.00	7.50	8.00	9.00	10.50	16.00	20.00
B	5.12	6.12	7.50	8.37	9.25	12.87	15.62	19.50	23.25
C Max	7.78	8.31	10.24	11.20	11.57	14.69	17.77	23.32	25.36
D Dia	6.00	6.00	7.00	8.00	8.00	12.00	18.00	22.00	
E	2.47	2.75	3.37	3.75	4.12	5.12	6.93	8.87	9.93
H	0.84	0.97	1.12	1.25	1.31		1.44	1.62	1.81
P Max	150 psi					100 psi			75 psi
Wt, lb	15	25	42	52	66	100	236	375	465