



AVK SERIES 603 UNIVERSAL SUPA® FLANGE ADAPTOR

Mild steel GEOMET coated bolts/nuts, WRAS approved EPDM sealings

603/A-4200

AVK Supa® is a range of universal straight couplings, step couplings and flange adaptors for cast iron, ductile iron, steel, uPVC and asbestos cement pipes. Supa® flange adaptors are easy to mount due to the anti-friction coated bolts and nuts and the possibility of up to $\pm 4^\circ$ angular deflection. The Mild steel GEOMET bolts/nuts and the high quality coating offer a durable corrosion protection.

Product description:

Supa® adaptor - bolts/nuts of mild steel for drinking water and neutral liquids to max. 70°C. Maximum working pressure 16 bar. Insulation essential for temperatures of 0°C and below.

Standards:

- Standard flange drilling to EN1092 (ISO 7005-2), PN 16
- Drinking Water Inspectorate Regulation 31 compliant.
- 1.5 x PN

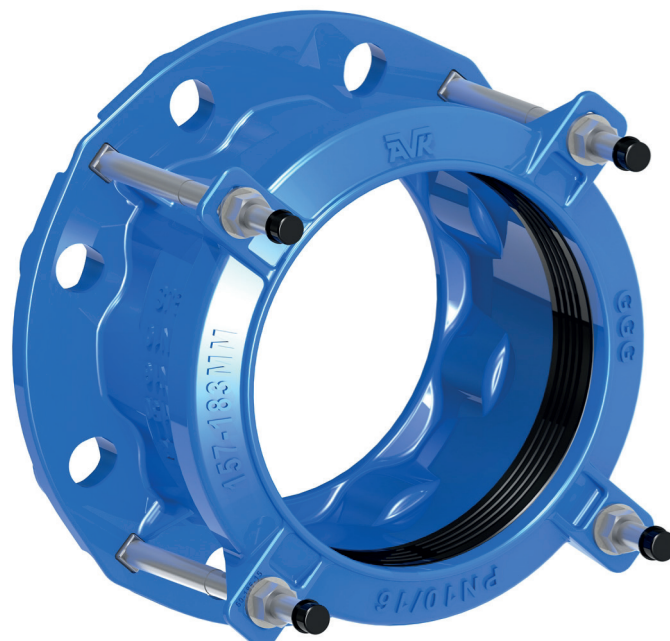
Test/Approvals:

- WRAS approved Materials

Features:

- Mild steel GEOMET coated bolts/nuts comply with WIS4-52-03
- Light weight design
- $\pm 4^\circ$ angular deflection on each side
- Drinking water approved EPDM gasket
- The bolt ends are protected with plastic caps
- The moulded ribs in the gasket absorb minor imperfections in the pipe
- Versatile design tolerances typical 26 mm to cover all pipe materials
- Epoxy coated according to DIN 30677-2 and GSK approved..

Note : This fitting is not designed for end load resistant applications.
Suitable for use on 304 & 316 stainless steel pipe ≤ 304 O.D & ≥ 2 mm wall thickness.



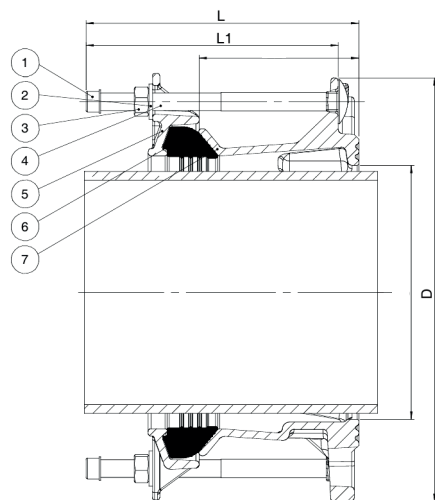
Expect ... **AVR**

The designs, materials and specifications shown are subject to change without notice. This is due to the continuous development of our product programme.

AVK SERIES 603 UNIVERSAL SUPA® FLANGE ADAPTOR

603/A-4200

Mild steel GEOMET coated bolts/nuts, WRAS approved EPDM sealings



Flange DN	Drilling
50/65-80	EN1092-2, ANSI B16 CL125, BS10 Table A, D and E
100	EN1092-2, ANSI B16 CL125, BS10 Table A, D, E, F and H
150-200	EN1092-2, ANSI B16 CL125, BS10 Table E
250	EN1092-2, ANSI B16 CL125
300	EN1092-2, ANSI B16 CL125, BS10 Table E
350	EN1092-2, BS10 Table A
400	EN1092-2, ANSI B16 CL125

Component list:

1. Body	Ductile Iron, Minimum GGG-40/50 BSEN 1563:1997	5. Gland Ring	Ductile Iron, Minimum GGG-40/50 BSEN 1563:1997
2. Washers	Hardened Steel Zinc Plated and Passivated	6. Rubber Seals	EPDM to BS EN 681-1
3. Bolts	Steel Grade 8.8 minimum GEOMET coated M12	Coating	Fusion Bonded Epoxy
4. Nuts	Steel Grade 8.8 GEOMET coated	Domed Caps	Plastic

Reference nos. and dimensions:

	Flange DN	L mm	L1 mm	D mm	Sealing Range mm	Bolts	Weight KG
603-074000-4-2000	50	98	47	172	57 - 74	4	3.9
603-074000-4-2000	50/60	98	47	185	57 - 74	4	4.1
603-108000-4-2000	80	100	47	200	84 - 106	4	5.0
603-108001-4-2000	80/100	100	47	200	84 - 106	4	5.4
603-133000-4-2000	100	100	47	240	109 - 133	4	5.8
603-133001-4-2000	100/125	100	47	240	109 - 133	4	5.8
603-183000-4-2000	150	109	56	293	157 - 183	4	9.3
603-183002-4-2000	150	109	56	293	157 - 183	4	9.3
603-215000-4-2000	200	117	110	343	193 - 215	4	11.6
603-242000-4-2000	200	117	65	353	218 - 242	4	12.4
603-242002-4-2000	200	117	65	353	218 - 242	4	12.4
603-268000-4-2000	250	117	110	406	242 - 268	6	17.0
603-292000-4-2000	250	119	61	406	268 - 292	6	18.8
603-292002-4-2000	250	119	61	406	268 - 292	6	18.0
603-327000-4-2000	300	119	59	483	301 - 327	6	22.4
603-327002-4-2000	300	119	59	458	301 - 327	6	22.4

The designs, materials and specifications shown are subject to change without notice. This is due to the continuous development of our product programme.